

Crafted by ALLBIM NET
Powered by Allplan

The BIM Challenge

Constanța, Romania
24-29 aug 2026





What is the BIM Challenge?

The BIM Challenge is an event where students work together around something very simple: **learning how real projects actually work.**

For one week, students from architecture, MEP and civil engineering collaborate on the same project, using BIM tools and workflows.

At the same time, companies and professionals join the event through presentations, discussions, brainstorming sessions and mentoring.

The result is an environment where education and industry meet in a very practical way.

Why The BIM Challenge Exists



The AEC industry is evolving quickly, becoming more collaborative and digital.

Projects increasingly require architects, engineers and MEP specialists to work together using BIM workflows.

Students often learn these disciplines separately, while companies need professionals who can work across them **from day one.**

The BIM Challenge was created to bring these worlds closer together, by giving students the chance to collaborate on a real interdisciplinary project, while connecting universities with industry professionals.

It's also an opportunity for companies to meet and support the next generation.

THE **BIM** CHALLENGE



One step further in 2026

Constanța
24-29 aug 2026



The BIM Challenge 2026

Main topics

The BIM Challenge is built around topics that are becoming essential in the AEC industry:

- interdisciplinary collaboration
- BIM workflows in real projects
- digital tools used by professionals
- communication between disciplines
- innovation in design and construction

Instead of theory, the focus is always on how things actually work in practice.

The BIM Challenge 2026

Participants

Participants include:

- architecture students
- civil engineering students
- MEP students
- professors and academic staff
- engineers and designers from industry
- companies active in the AEC sector

20th
Edition

+150
Participants





The BIM Challenge 2026

International edition

The 2026 edition takes things one step further - we go international.

Students and teachers from several European countries will join the event, working in mixed teams and exchanging perspectives.

The BIM Challenge 2026

Proof it works

The BIM Challenge community has already produced strong results. In the latest international Allplan Student Contest:

- the winning team came from Romania
- their project was the winning project of The BIM Challenge 2025
- 18 out of 38 finalists were Romanian

The jury highlighted exactly the skills The BIM Challenge promotes: **collaboration, coordination and clear project delivery.**



Why is it relevant for you?

Because your universities & students are looking for:

- international experiences
- real BIM workflows
- a BIM competition to show off their skills
- collaboration opportunities
- modern tools and certifications
- something different from a traditional lecture



Why Companies Get Involved



For many companies, The BIM Challenge is also one of the earliest opportunities to meet future engineers and architects before they enter the job market. They can:

- meet talented students early in their careers
- connect with universities and educators
- present technologies and workflows
- identify future interns or employees
- support education & innovation in the industry



What students gain

- real project experience
- teamwork in English
- working with Allplan, SCIA Engineer, Bimplus, Bluebeam, AX3000 etc.
- networking with companies
- international friendships
- certifications
- fun, travel, inspiration

What teachers gain

- BIM-focused training
- interdisciplinary perspective
- exposure to international practices
- connection with the industry
- insights they can take back into their teaching



Number of Editions

From its beginnings as a Summer School, **The BIM Challenge** has evolved into a key event for learning about collaboration and innovation in the **AEC industry**. And this year was no different.

19

2007	2008	2009	2010	2011
2012	2013	2014	2015	2016
2017	2018	2019	2020 online	2021 online
2022	2023	2024		

2025

Number of Participants

Each edition gathers a growing community of **students** and **professionals** eager to collaborate, exchange ideas, and apply **BIM** practices in real-world challenges.

180 participants



90 professionals



90 students



"This could be a blueprint for many other countries. Amazing!"

Ramon Steins, Allplan GmbH

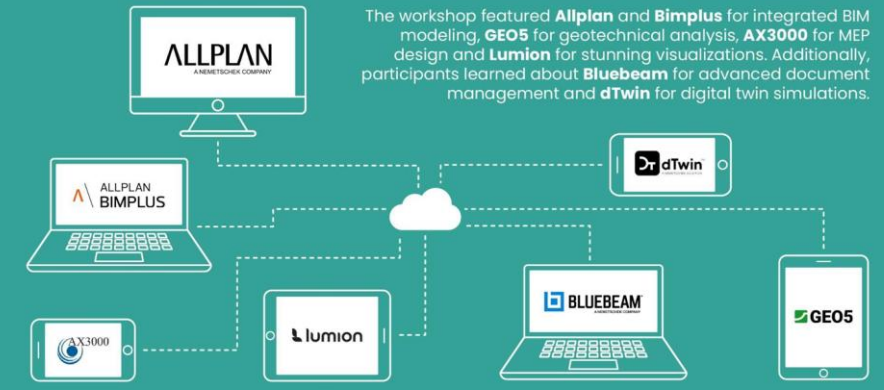
Activities During the Event



Participants started off with an immersive **workshop**, exploring practical **BIM** applications in a project that requires **collaboration, communication** and **teamwork** under real-world constraints.

Over the course of the event, **speakers** from both industry professionals and academic experts, covered cutting-edge topics about **BIM** and provided interesting insights.

Software Presented at the Event





To BIM or Not to BIM Workshop

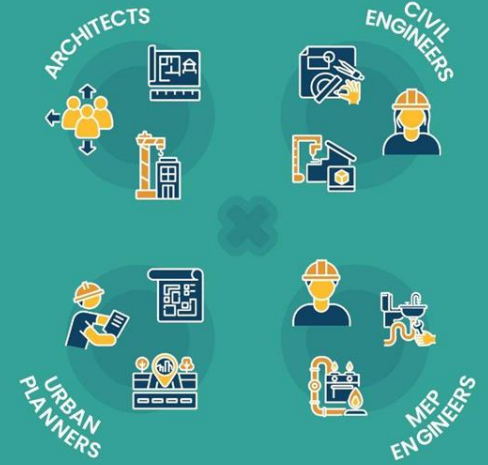
The workshop was an immersive, hands-on experience that showcased the full process of designing and implementing a BIM-based project.

Teams carefully integrated students from diverse disciplines: architecture, urban planning, structural and MEP engineering, mirroring the collaborative nature of professional BIM projects.

Each role had specific responsibilities and this setup required seamless **collaboration**, **communication** and **coordination** across all disciplines, giving participants a true taste of integrated project delivery.

The teams, guided by experts, included students from all fields of the AEC industry.

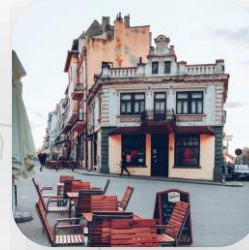
- 10 TEAMS
- 07 DISTINCT DESIGN DISCIPLINES
- 10 COMPLEX INFORMATION MODELS
- 01 CDE TREASURE HUNT
- 11 HOURS OF WORK
- 05 SOFTWARE APPS USED
- 01 COMMON DATA ENVIRONMENT



1st STEP	2nd STEP	3rd STEP	4th STEP
<p>EXPLORING THE CDE ENVIRONMENT</p> <p>Participants engaged in a Treasure Hunt inside the Common Data Environment Bimplus to explore its structure, purpose and benefits for collaborative project management.</p>	<p>EMBARKING ON THE DESIGN TASK</p> <p>Each team worked on their Pavilion design by setting up the Bimplus CDE, developing 7 discipline-specific information models and organizing the digital workflow for coordinated project design.</p>	<p>COLLABORATION AND DELIVERY</p> <p>Using Bimplus, teams performed interdisciplinary coordination, conducted clash detections and delivered the final information models, complemented by renders and project presentations.</p>	<p>PRESENTING THE FINAL RESULTS</p> <p>The final stage involved presenting the outcomes of their hard work in front of a broad audience, showcasing collaborative achievements and the value of integrated BIM processes.</p>



● **Main Universities**
in Romania



How much is it?



€245

1 week event,
Accommodation in
student dorms



€130

1 week event
No accommodation
included



€430-640

1 week event
Accommodation in
a 3*/4* hotel

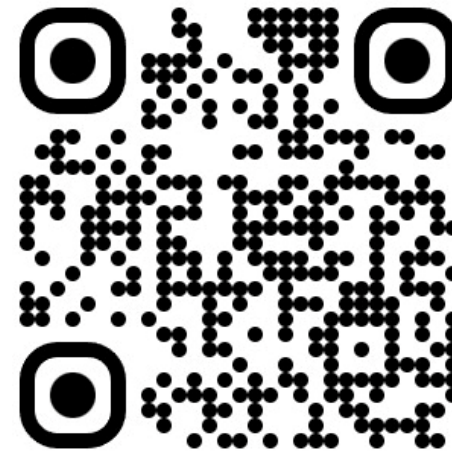
These are the standard prices for students. They do not include transport. *For hotel accommodation, the amounts shown are estimates.* Early bird rates are also available on the website. They include access to all activities & parties, accommodation, coffee breaks and most of the meals.

Crafted by ALLBIM NET
Powered by Allplan

The BIM Challenge

Fill in the form if you are interested and would like to stay updated with the latest news about the event.

Constanța, Romania
24-29 aug 2026



bimchallenge.net



The BIM Challenge

Crafted by ALLBIM NET
Powered by ALLPLAN

Join us in creating the pilot international edition.
Small steps. Real value. Big future impact.



 bimchallenge.net

We stand with those who build the world

WE ARE ALLBIM NET

